



# Summer @ The Preserve

## INSIDE THIS ISSUE:

<i>Eagle Scout Projects</i>	1-2
<i>Trail Maintenance</i>	2
<i>Poking Around</i>	3
<i>Recruit a Member</i>	3
<i>Trash Talk</i>	3
<i>Upcoming Events</i>	4
<i>Membership Form</i>	4

## Did you know?

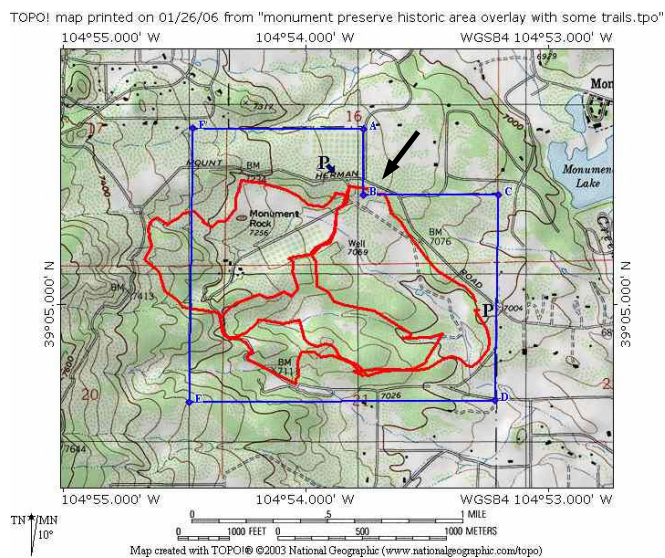
- The Preserve was the site of a Forest Service tree nursery from 1907-1965 specializing in seed extraction and germination of seedlings
- The Memorial Grove was built to acknowledge the fallen Forest Service personnel in World War I. Today, it still serves as a memorial for Forest Service personnel.
- The chimney remnants seen on the Preserve are from the old Nursery Caretaker's home built in 1909
- The Monument Preserve has over 22 miles of trails but only one officially marked trail (715).

## MOVE OVER MAD HATTER!

The Monument Preserve is bordered by a combination of USFS Pike National Forest, Colorado State Land Board property (aka Section 16 School Board Land), and private property. The adjacent Section 16 land is currently being developed and turned into Forest View Acres Filing 4. This process has been ongoing for most of the last 10 years.

Interestingly, part of Section 16 juts out across Mt. Herman Rd and into what most of us thought was part of the Monument Preserve, or at a minimum part of the Pike National Forest. All points inside the blue lines are the USFS historic area known as the Monument Preserve. Notice the triangle shaped area formed by Mt. Herman Rd and point "B". This is where the Mad Hatter Trail crossed a portion of private land.

The private property was sold and is currently under development. The portion of the Mad Hatter trail crossing the private



Map showing Monument Preserve property in blue and arrow showing part of Mad Hatter trail in red outside the Preserve perimeter.

property has now been closed to allow the new owners to build their home. Luckily, trail users are able to take advantage of an existing social trail which bypasses the closed trail. FOMP has adopted this portion of the trail for some needed maintenance and upgrades.

The Mad Hatter trail now continues directly East of the Fire Center entrance road and skirt-

ing around the property dodging in and out of Pine trees, scrub oak, and rolling up and down very much in the spirit of the old section of the trail. It has some very interesting features for hikers, horse riders and bikers alike.

Please help by staying on this beautiful new single-track and if you are able, please join us in upcoming work days this fall and winter.

## SUMMER EAGLE SCOUT PROJECTS

In late May, Austin Glynn and Chris Ciccollela attended the FOMP board meeting requesting some suggestions and guidance for Eagle Scout projects. On successive Satur-

days in June, the 17<sup>th</sup> and the 24<sup>th</sup>, these young men organized and implemented some impressive work on USFS Trail 715. Both of these projects had over 20 people working all

day on different sections of this trail. FOMP volunteers trained Austin, Chris, their crew leaders, and worked side-by-side with them as part of their crew

(Continued on page 2)

## SUMMER EAGLE SCOUT PROJECTS

*(Continued from page 1)*

to ensure the work was safe and permanent. The work involved pruning back the Gambel Oak, fixing some dangerous pruning that left sharp stubs of oak above the ground, installing water bars with drains, and building check dams to help fill in some of the deeper gullies.

They both did an impressive job organizing and executing projects with large amounts of people in logistically difficult areas to get to. This trail work could not have been completed at better time – it rained half an inch on June 25, the first measurable rain in months in the areas west of Monument.

The inches of rain that fell in early July proved the success of the Eagle Scout

projects, but also showed we have a long way to go. Due to lack of snow in the area, folks have been able to use these trails much sooner in the Spring than normal. The dry conditions prevented the trails from becoming packed, so a loose layer of material formed on all of them. The damage was there, it just took the rain to show it. All of the Scout water bars and drains withstood the rain, and no more gullies were formed in those areas.

The continued rain in July caused a gully immediately below the last check dam installed during the Eagle Scout projects. The trail was damaged from that point all the way through to where FOMP trail work nights had preventative

measures in place. Thanks to the hard work of the Eagle Scouts, the damage to the trails due to the recent rains was greatly minimized and only existed where proper preventative measures are not in place.



Eagle Scouts and volunteers taking a lunch break during recent project work on the trails.

## FOMP TRAIL MAINTENANCE

Hundreds of volunteer hours have gone into damage prevention, repair, and maintenance of trails this year thanks to our community. In addition to our normal monthly trail work nights, FOMP volunteers have taken on several other major projects.

Volunteers were out on the trails early this year attending to a popular trail around Section 16 property that sold and was being developed. The dry winter and a nice January day helped us re-establish an existing social trail around the edges of this property just off Mt Herman Road near the Fire Center Administrative entrance. Enough folks were present to close the old trail on both ends permanently, and the recent rains have germinated the re-seeding done by some of the younger volunteers who joined us that day.

This summer, a couple of scheduled trail work nights by FOMP volunteers have helped many of the trails needing work. Gullies were filled back in with trail, and small check-dams were put in place to catch any loose trail that might wash down the trail or move with the traffic. More preventative measures were put in place as well, typically rock-armored water bars built out of large rocks anchored deep in the trail to withstand traffic.

Two notable companies, Balanced Rock Bike & Ski in Monument and Cassatt Corporation in Colorado Springs have been sponsoring employees' time to maintaining the trails. Employees from both companies have been out fixing damage on 715 where the trail completely washed out where the trail is heading west deep in the Beaver Creek drainage under the power lines. A huge gully formed from run-off coming down from Mt Herman Road in a spot that has been an ongoing problem especially for horses. Alternatives circumventing this spot should be completed shortly. Now the trail will be much safer for horses and all trail users. Many thanks to Balanced Rock and Cassatt!



Trail maintenance volunteers in a gully on 715. Left to Right: Chris Tirpak (front), Tim Watkins, Sari, and Mark Emeis.

Our trails are really need a lot of preventative maintenance to withstand the huge increase in popularity. The traffic on these trails continues to grow every year, and we need to grow our volunteer base to mitigate this impact and keep these trails nice for generations to come.

Please come join us in keeping these trails nice, safe, and usable by all trail users. FOMP trail crew leaders are trained by the USFS, IMBA, and other outdoor-focused organizations to safely and correctly build and maintain trails for all types of users to enjoy. It is important that all types of trail users are present: hikers, horse riders, bikers, runners, etc, so that the work performed meets the needs of everyone. Rather than stressing quantity, we focus on quality, safe, and permanent work that meets the needs of the trails and trail users. The USFS supports our efforts by providing tools and attending our meetings to provide information and guidance. FOMP meets the second Tuesday of every month at the parking lot near Mt Herman Rd and Nursery Rd. at 6 pm, plus we work informally on other nights and weekends as needed.

## POKING AROUND AT THE PRESERVE

Walk, ride, meander, hike or run through the Preserve during these warm summer days and you are likely to be overcome with waves of yellow flowers in the open fields. Are these part of the famous beautiful wildflowers of Colorado? Not quite. Yellow toadflax, "Butter and Eggs" or "Wild Snapdragons" (*Linaria vulgaris*) is an invasive, perennial weed that is considered noxious in Colorado and other western states.

Seeds of yellow toadflax germi-

nate and emerge in early to mid-May. Toadflax invasion tends to occur near disturbances and degraded areas such as roadsides, abandoned lots and fields, gravel pits, clearings, and overgrazed rangeland. In Colorado, these weed species are found at elevations from 5,000 feet to over 10,000 feet.

Yellow toadflax has a vigorously growing root system which assists in its' spreading. According to CSU Extension, yellow toadflax infests over

40,800 acres in Colorado alone.

Although they are attractive color added

to the open fields in the summer, due to their voracious spreading, they are not a favored flower in Colorado.



Yellow Toadflax or "Butter and Eggs"

## RECRUIT A MEMBER

Do you know someone who regularly enjoys the use of the trails of Monument Preserve? Do you know someone who is interested in preserving and maintaining precious open spaces? Do you know someone who is interested in history and archeology? These people are all perfect members for the Friends of Monument Preserve.

This non-profit organization was formed in partnership with the US Forest Service in order to support, preserve and maintain this valuable local resource. The Friends of Monument Preserve hosts many rewarding and adventurous volunteer activities and are committed to preserving a lasting legacy of Open Space for all.

If you, or someone you know, would like to become a member of the Friends of Monument Preserve, simply complete the Membership form on the back of this newsletter and mail membership dues to:

Friends of Monument Preserve,  
PO Box 634  
Monument, CO 80132 or email  
[info@fomp.org](mailto:info@fomp.org)

*"Yellow Toadflax infests over 40,800 acres in Colorado alone" - CSU Extension*

## TRASH TALK!

Americans are producing more and more trash every year. In 1960 the average American produced 2.7 pounds of trash a day. Today the average American produces 4.4 pounds of trash. This increase in trash presents a real threat to the beauty and health of our natural public lands and open spaces.

The Monument Preserve is not immune from it's own trash issues. Illegal dumping, dog waste and trash from trail users take up valuable volunteer time



No more trashcans at the Trailheads. Pack it Out!

and detract from the natural beauty of the area. The trashcan at the main trailhead has become a problem with additional trash being added to the can and the discontinuation of

our regular trash service. The FOMP board of directors recently voted to remove the trash can at the main trailhead at the corner of Mt. Herman and Nursery Rd. We are asking everyone to adopt a new attitude of "Pack it Out!" New signs will be posted at the trailhead encouraging all trail users to pack out their own trash.

Please be aware of the trash you generate while using the Preserve, and if you come across someone else's trash, bend down and "Pack it Out!"



**FRIENDS OF  
MONUMENT PRESERVE**

PO Box 634  
Monument, CO 80132  
Email: [info@fomp.org](mailto:info@fomp.org)  
[www.fomp.org](http://www.fomp.org)

*Haven't heard from  
us in a while?*

*Renew your  
membership today to  
stay in the loop!*

**We're on the Web!!**  
**[www.fomp.org](http://www.fomp.org)**

## *Upcoming Events*

When	What	Where
Sept 12th 6 pm	Trail Maintenance	Main Trailhead (Mt Herman/Nursery Rd)
Sept 20th 7 pm	FOMP Board Meeting	Classroom at Fire Center
Sept 30th 9 am	Trail Maintenance	Main Trailhead (Mt Herman/Nursery Rd)
Sept 31st 1 pm	Trail Maintenance	Main Trailhead (Mt Herman/Nursery Rd)

Mailing Address Line 1  
Mailing Address Line 2  
Mailing Address Line 3  
Mailing Address Line 4  
Mailing Address Line 5

## MEMBERSHIP FORM



**FRIENDS OF  
MONUMENT PRESERVE**

**Become a member of the Friends of Monument Preserve.**

As a member of the Friends of Monument Preserve, you will help fund trail maintenance, educational programs, volunteer events and more!

**Make your tax deductible donation to**

Friends of Monument Preserve  
PO Box 634  
Monument, CO 80132

### Annual Memberships

Individual \$15 \_\_\_\_\_  
Family \$25 \_\_\_\_\_  
Business/Sponsor \$100 \_\_\_\_\_  
Other \_\_\_\_\_

Name \_\_\_\_\_  
Company \_\_\_\_\_  
Address \_\_\_\_\_  
City \_\_\_\_\_ State \_\_\_\_\_ Zip \_\_\_\_\_  
Phone \_\_\_\_\_ Email\* \_\_\_\_\_

\* used for newsletters and event reminders

**Join now for member  
benefits through  
December 2007 !**

Your Interests:

Hiking \_\_\_\_\_ Biking \_\_\_\_\_ Horseback riding \_\_\_\_\_  
Fishing \_\_\_\_\_ Nature/Ecology \_\_\_\_\_ Preservation/Archeology \_\_\_\_\_